



BARD1

LIFE SCIENCES LIMITED

Transforming early cancer detection & prevention

AGM PRESENTATION

28 November 2017

Forward Looking Statements

This presentation has been prepared by BARD1 Life Sciences Limited (“BARD1” or the “Company”) based on information available to it as at the date of this presentation. The information in this presentation is provided in summary form and does not contain all information necessary to make an investment decision.

This presentation does not constitute an offer, invitation, solicitation or recommendation with respect to the purchase or sale of any security in BARD1, nor does it constitute financial product advice or take into account any individual’s investment objectives, taxation situation, financial situation or needs. An investor must not act on the basis of any matter contained in this presentation but must make its own assessment of BARD1 and conduct its own investigations. Before making an investment decision, investors should consider the appropriateness of the information having regard to their own objectives, financial situation and needs, and seek legal, taxation and financial advice appropriate to their jurisdiction and circumstances. BARD1 is not licensed to provide financial product advice in respect of its securities or any other financial products. Cooling off rights do not apply to the acquisition of BARD1 securities.

Although reasonable care has been taken to ensure that the facts stated in this presentation are accurate and that the opinions expressed are fair and reasonable, no representation or warranty, express or implied, is made as to the fairness, accuracy, completeness or correctness of the information, opinions and conclusions contained in this presentation. To the maximum extent permitted by law, none of BARD1 its officers, directors, employees and agents, nor any other person, accepts any responsibility and liability for the content of this presentation including, without limitation, any liability arising from fault or negligence, for any loss arising from the use of or reliance on any of the information contained in this presentation or otherwise arising in connection with it.

The information presented in this presentation is subject to change without notice and BARD1 does not have any responsibility or obligation to inform you of any matter arising or coming to their notice, after the date of this presentation, which may affect any matter referred to in this presentation.

The distribution of this presentation may be restricted by law and you should observe any such restrictions.

This presentation contains certain forward looking statements that are based on the Company’s management beliefs, assumptions and expectations and on information currently available to management. Such forward looking statements involve known and unknown risks, uncertainties, and other factors which may cause the actual results or performance of BARD1 to be materially different from the results or performance expressed or implied by such forward looking statements. Such forward looking statements are based on numerous assumptions regarding the Company’s present and future business strategies and the political and economic environment in which BARD1 will operate in the future, which are subject to change without notice. Past performance is not necessarily a guide to future performance and no representation or warranty is made as to the likelihood of achievement or reasonableness of any forward looking statements or other forecast. To the full extent permitted by law, BARD1 and its directors, officers, employees, advisers, agents and intermediaries disclaim any obligation or undertaking to release any updates or revisions to information to reflect any change in any of the information contained in this presentation (including, but not limited to, any assumptions or expectations set out in the presentation).

BARD1 Life Sciences (ASX:BD1)

- **Medtech company** focused on developing non-invasive diagnostics for early detection of cancer to save patients' lives
- **Platform technology** of BARD1 tumour markers with potential Dx and Rx applications across multiple cancers
- **Diagnostic tests** in development for lung and ovarian cancers
- **Cancer vaccine** project at research-stage
- **Pilot studies** demonstrating accuracy of BARD1 autoantibody panels for detection of lung and ovarian cancers with high sensitivity and specificity
- **Planned studies** to further develop and validate the performance of BARD1 Tests
- **Large market opportunities** and diversified risk across 3 programs

Transforming early cancer detection and prevention

BARD1
Lung

BARD1
Ovarian

BARD1
Vaccine

Company Snapshot

CORPORATE INFORMATION	
Listed	20 June 2016
Industry	Biotechnology
Products	Cancer diagnostics
Headquarters	Perth, Australia
Ticker	ASX:BD1
Ordinary Shares	742m
Market Cap (@24/11/17)	A\$5.94m
Share Price (@24/11/17)	A\$0.008
52w H/L Range	A\$0.064-0.007
Cash (@ 30/9/17)	A\$1.71m

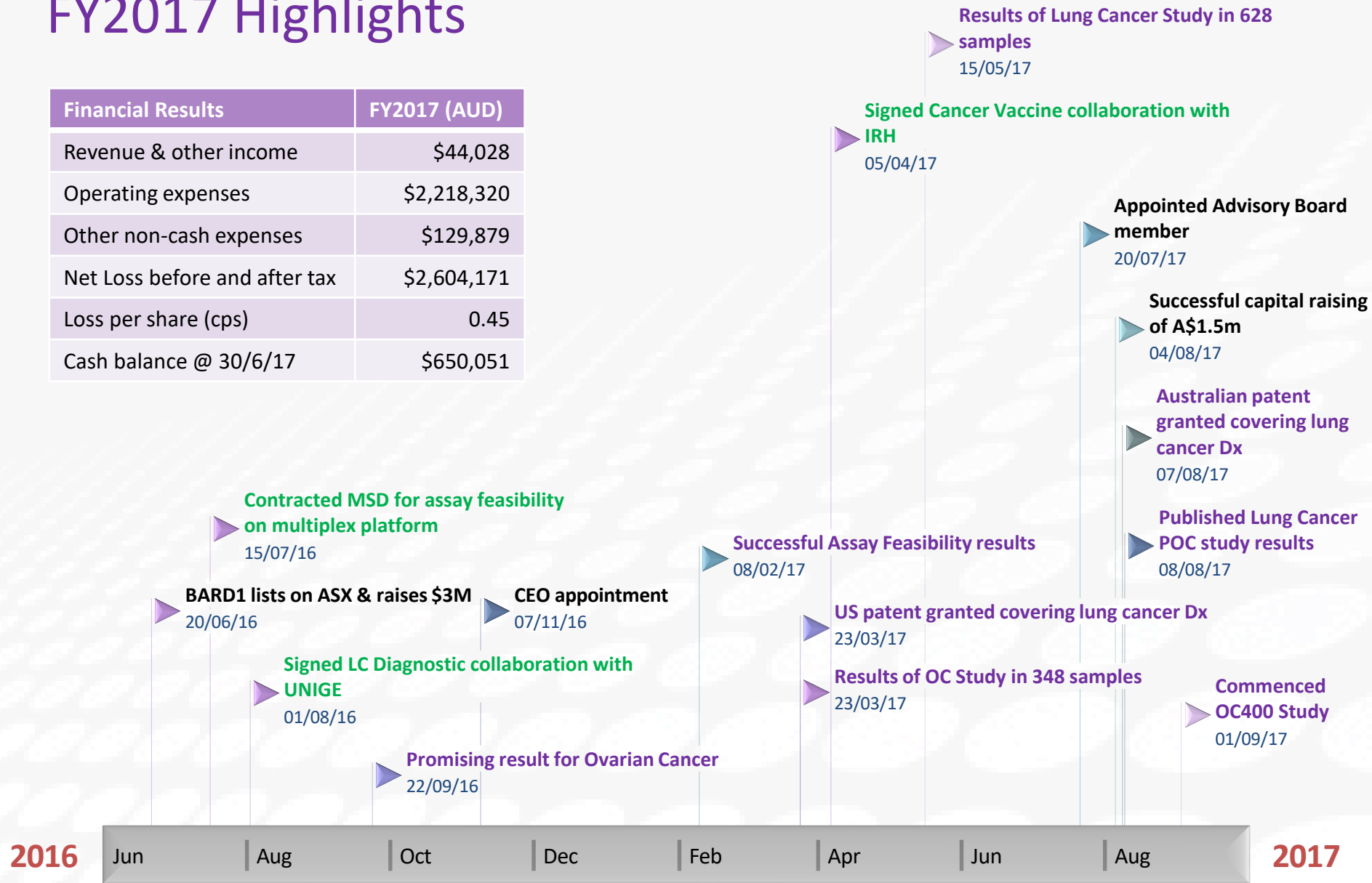
SHAREHOLDERS (@ 24/11/17)	# SHARES	% HOLDING
Irmgard Irminger*	108,252,420	14.59%
Tony Walker*	88,501,626	11.93%
Peter Lynton Gunzburg	29,835,004	4.02%
Universite de Geneve*	12,500,000	1.68%
Vendor Shares*	229,503,236	30.93%
Top 20 Holders	391,324,085	52.74%
TOTAL	741,995,731	100.00%

*Escrowed until 20/6/18



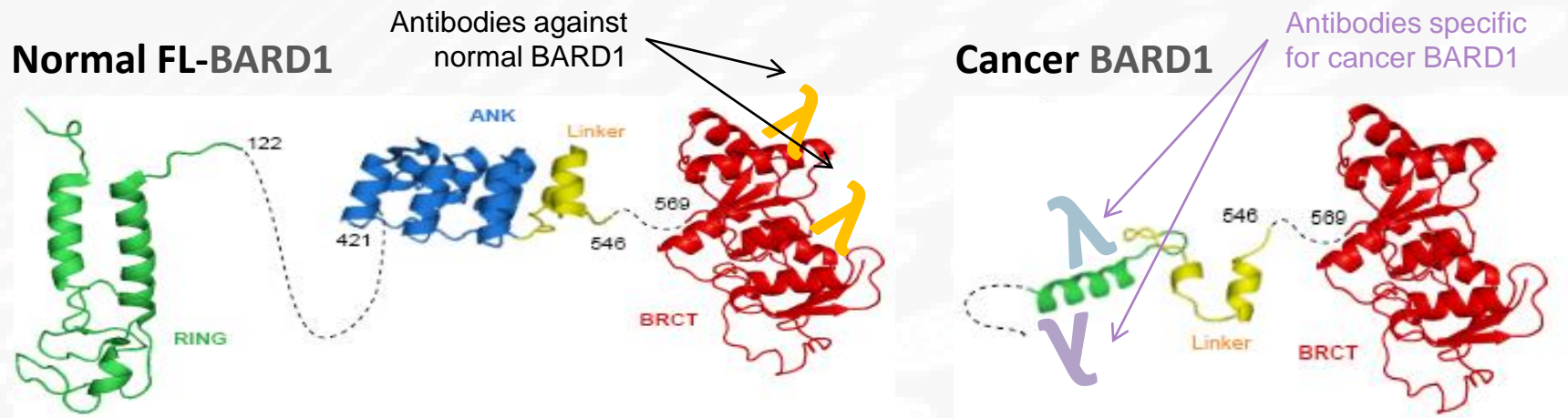
FY2017 Highlights

Financial Results	FY2017 (AUD)
Revenue & other income	\$44,028
Operating expenses	\$2,218,320
Other non-cash expenses	\$129,879
Net Loss before and after tax	\$2,604,171
Loss per share (cps)	0.45
Cash balance @ 30/6/17	\$650,051



Platform Technology

- Normal cells express **FL BARD1** protein that functions as a *tumour suppressor* to prevent cancer
- Cancer cells express abnormal **BARD1 isoforms** that drive *oncogenesis* and are correlated with cancer progression & poor prognosis
- BARD1 isoforms are immunogenic and induce **BARD1 autoantibodies** reflecting the early *immune response to cancer*



- **BARD1 Technology** has potential applications as *diagnostic markers & therapeutic targets* for the diagnosis and treatment of various cancers

Development Pipeline

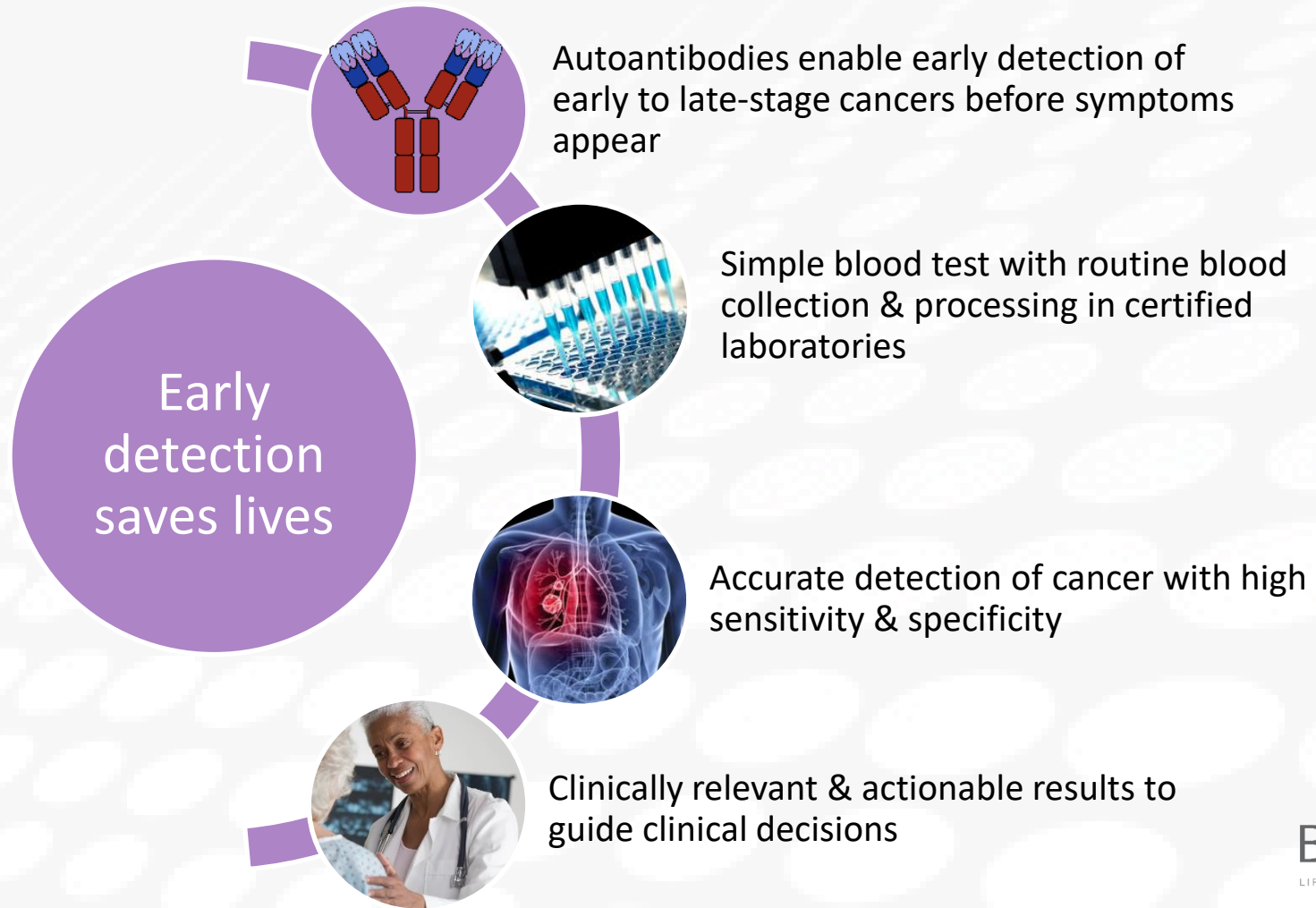
- Pipeline of BARD1 diagnostics and therapeutics in development to diversify product risk and expand market opportunities

DIAGNOSTICS	PRODUCT	INDICATION	PLATFORM	USE	RESEARCH	ASSAY DEVELOPMENT	CLINICAL VALIDATION	MARKETING / APPROVAL
	BARD1 <i>Lung</i>	Lung Cancer	ELISA (Blood)	Screening & Risk Assessment				
	BARD1 <i>Ovarian</i>	Ovarian Cancer	ELISA (Blood)	Detection & Monitoring				

THERAPEUTICS	PRODUCT	INDICATION	RESEARCH	PRE-CLINICAL	PHASE I	PHASE II	PHASE III	APPROVAL
	BARD1 <i>Vaccine</i>	Cancer						

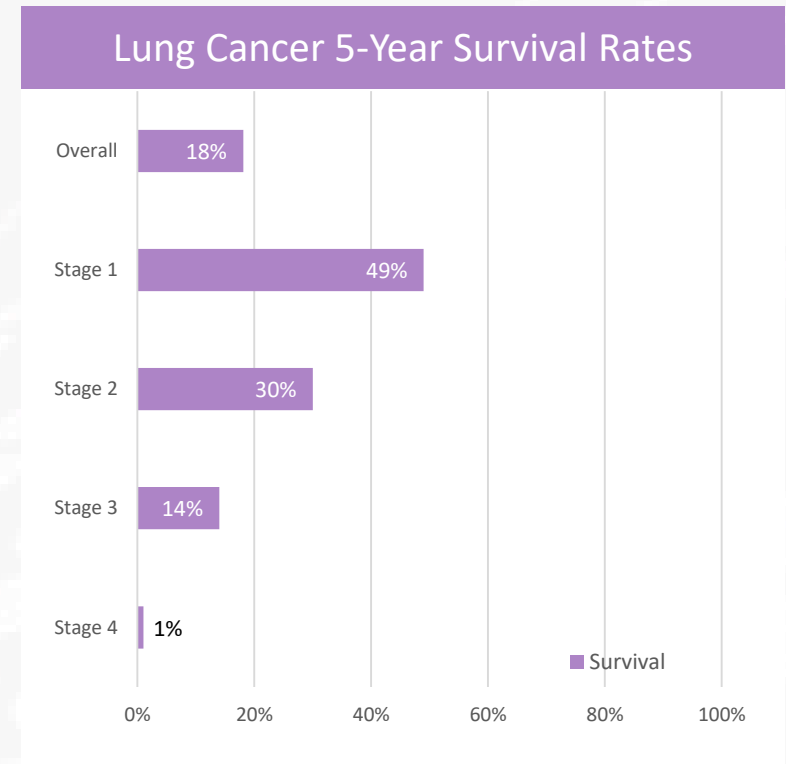
BARD1 Diagnostics

- BARD1 autoantibody (AAb) tests detect BARD1 AAbs against BARD1 isoforms in human blood
- BARD1 algorithm combines multiple AAb measurements into a cancer score that identifies the presence or absence of a specific cancer



Lung Cancer

- Lung Cancer is the **leading cause of cancer deaths** worldwide
 - World: 1.82m new cases & 1.59m deaths pa
 - US: 222,500 new cases & 155,870 deaths pa
- **Smoking** is major risk factor in 85% cases
- **Poor overall 5-year survival** of 18% since 80% diagnosed at late-stage
- **Early-detection saves lives** increasing survival to over 49%
- **Current Dx:** chest X-ray → CT scan → bronchoscopy, MRI/PET imaging → biopsy
 - Inaccurate, expensive, invasive or radiation exposure
 - Annual CT screening recommended in high-risk asymptomatic adults aged 55-80 years with >30 pack-year smoking history (USPSTF 2014)



Source: <https://www.cancer.org/cancer/non-small-cell-lung-cancer/detection-diagnosis-staging/survival-rates.html>

Unmet need for simple, accurate & affordable blood test for early detection

BARD1 Lung Cancer Test

BARD1 Lung Cancer Test is an ELISA-based blood test in development for **early detection of lung cancer**

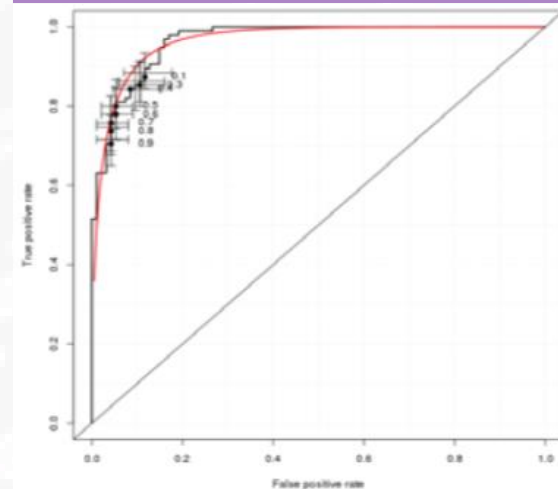
- **Pilot studies** completed showing high accuracy for detection of lung cancer with up to 80% sensitivity & 77% specificity, and promising results for gender-specific algorithms

Study	n	Model AUC	Test AUC	Sensitivity	Specificity
LC POC	187	0.96	0.86	80%	77%
LC 600	628	0.85	0.80	80%	68%

AUC is the accuracy of the test; Sensitivity is the % of people with cancer that correctly test positive; Specificity is the % people without cancer that correctly test negative.

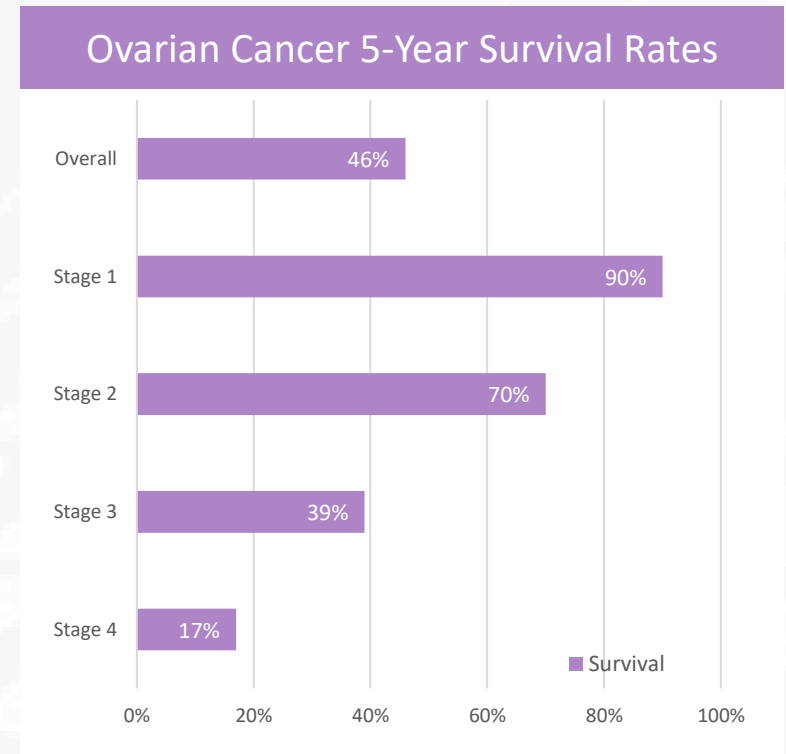
- **Assay Development** planned for 2H18 to further develop, optimise and technically validate the test on a commercial platform
- **Clinical Validation** required to demonstrate clinical performance for intended use
 - **Risk assessment** of malignancy in patients with indeterminate pulmonary nodules following CT
 - **Screening test** for early detection of lung cancer in high-risk asymptomatic individuals

ROC curve for BARD1-Lung



Ovarian Cancer

- Ovarian Cancer is the **leading cause of gynecological cancer deaths**
 - World: 239K new cases & 152K deaths pa
 - US: 22,440 new cases & 14,080 deaths pa
- Highest risk in **post-menopausal women over 50 years** & hereditary predisposition
- **Low overall 5-year survival** of 46% since 61% diagnosed at late-stage
- **Early-detection saves lives** increasing survival to over 90%
- **Current Dx:** pelvic exam + TVUS → CA125, ROCA or OVA1 blood tests → CT/MRI/PET imaging → Sx biopsy
 - Inaccurate, unreliable, expensive or invasive
 - Annual screening not recommended in average-risk asymptomatic women (USPSTF 2012)



Source: www.cancer.org/cancer/ovarian-cancer/detection-diagnosis-staging/survival-rates.html

Unmet need for simple, accurate & affordable blood test for early detection

BARD1 Ovarian Cancer Test

BARD1 Ovarian Cancer Test is an ELISA-based blood test in development for **early detection of ovarian cancer**

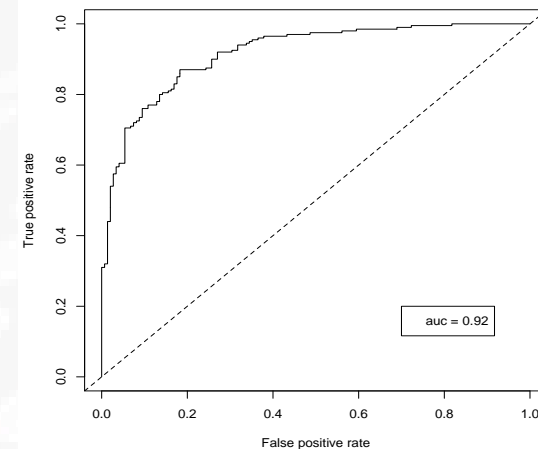
- **Pilot studies** completed showing high accuracy for detection of ovarian cancer with up to 92% sensitivity & 84% specificity

Study	n	Model AUC	Test AUC	Sensitivity	Specificity
OC POC 1	116	0.86	0.75	68%	65%
OC POC 2	88	0.96	0.89	92%	84%
OC 300	348	0.92	0.85	78%	78%

AUC is the accuracy of the test; Sensitivity is the % of people with cancer that correctly test positive; Specificity is the % people without cancer that correctly test negative.

- **OC400 study** commenced in 400 OC & healthy controls to optimise BARD1 panel & algorithm with results expected Dec-17
- **Assay Development** planned for 1H18 to standardise and validate technical performance of the test on a commercial platform
- **Clinical Validation** required to demonstrate clinical performance for intended use in **risk assessment** or **screening**

ROC curve for BARD1-Ovarian



BARD1 Research



Dx

Expand BARD1 **diagnostic** pipeline for other cancers

- Evaluate **BARD1 autoantibody (AAb) tests** for other cancers including prostate & breast cancers
- Investigate **BARD1 RNA test** for prediction of cancer progression in premalignant human specimens

Rx

Evaluate BARD1 **therapeutic** applications for cancer

- Entered **cancer vaccine collaboration** with IRH to evaluate a potential BARD1 vaccine for prevention or treatment of cancer in animal models

CDx

Explore future opportunities in **companion diagnostics** for patient selection and treatment monitoring

Large Market Opportunities

- Global cancer diagnostics market US\$101B¹

\$24B Lung Ca

\$7B Ovarian Ca

US market opportunities for screening tests²

Lung Cancer screening test

6.8M eligible current / former smokers 55-77y³

Ave reimbursement
LDCT \$255 per test

US\$1.74B market potential

US\$86.7M sales potential



5% market share



Ovarian Cancer screening test

43.2M average-risk women 50-74 years⁴

Ave \$100 per test x
10% uptake

~US\$432M market potential for blood tests

US\$21.6M sales potential

- Global cancer vaccines market US\$3.5B⁵

Commercialisation Strategy

BARD1
Lung

BARD1
Ovarian

- **Technical Validation** on a commercial platform to demonstrate technical performance
- **Clinical Validation** to demonstrate clinical performance
- **Market** first as laboratory developed tests (LDTs), then as invitro diagnostic (IVD) kits in US, EU and elsewhere
- **Commercialise** through partnering LDTs with central laboratories, and IVDs with distributors or trade sale

BARD1
Vaccine

- Demonstrate **POC** of BARD1-specific immune response and anti-tumour activity in animal models
- Complete **preclinical** safety/toxicology studies in animals
- Conduct **Phase 1** clinical studies in healthy human volunteers in AU, followed by Phase 2a under IND in US
- **License** at early clinical-stage to biopharma partner for upfront fees, milestone payments and royalties

Intellectual Property Portfolio

- 5 patent families covering various BARD1 DNA & protein sequences, methods of diagnosis & treatment, and use in multiple cancers

Patent Family 5	Title	Granted 6	Pending 20	Expiry
PCT/FR01/02731	Truncated BARD1 protein and its diagnostic and therapeutic uses	US, JP		2023*
PCT/IB2011/053635	BARD1 isoforms in lung and colorectal cancer and use thereof	US, JP, CN, AU	US, JP, CN (divisionals), EP, CA, IL, BR, SG	2031*
PCT/IB2011/054194	Kits for detecting breast or ovarian cancer in a body fluid sample and use thereof		US, EP	2032*
PCT/EP2014/073834	Lung Cancer Diagnosis		US, EP, CA, JP, IL, CN, AU, SG, KR	2034*
EP14002398.7	Novel non-coding RNA, cancer target and compounds for cancer treatment		US	2035*

*Plus any extension of term in the US due to prosecution delay

Leadership Team



PETER GUNZBURG BCom | Chairman

Public company director, stockbroker & technology investor, with 20+ years corporate advisory, capital raising, transaction & business management experience. Currently Chair of the Institute for Respiratory Health at UWA. Previously Director of Resolute Ltd, Australian Stock Exchange Ltd, Eyres Reed Ltd, CIBC World Markets Australia Ltd, Fleetwood Corporation Ltd, Dragon Mining Ltd, and Newzulu Ltd.



DR IRMGARD IRMINGER-FINGER PD PhD | Executive Director & Chief Scientific Officer

Founder and co-inventor of BARD1 and its technology, European Woman Entrepreneur Award finalist (2014), and internationally recognised expert in tumour biology with over 100 publications, several patents, and multiple international collaborations and keynote conference presentations. Currently Privat Docent at UNIGE and Adjunct Prof at UWA. Former Executive Director and founder of BARD1AG SA.



BRETT MONTGOMERY | Non-Executive Director

Public company director with extensive experience in leadership, mining company management, corporate governance and risk management. Currently Non-Executive Director of Tanami Gold NL. Previously Managing Director Kalimantan Gold NL, and Director of Magnum Gas and Power Ltd, Grants Patch Mining Ltd, and EZA Corporation Ltd.



PROF GEOFF LAURENT PhD FRCP(Hon) FRCPATH FMedSci | Non-Executive Director

Accomplished organisational leader, thought-leader, scientific editor, advisory board member & award winning respiratory scientist with over 300 peer reviewed publications. Currently Emeritus Professor at UWA, and Scientific Advisor/Consultant at Helmholtz Zentrum München. Previously Director of the Institute for Respiratory Health and Director of the Centre of Cell Therapy & Regenerative Medicine at UWA, Director of Centre for Respiratory Research, Vice-Dean of Enterprise, and Head of Department of Internal Medicine at University College London, and Past President British Association for Lung Research.

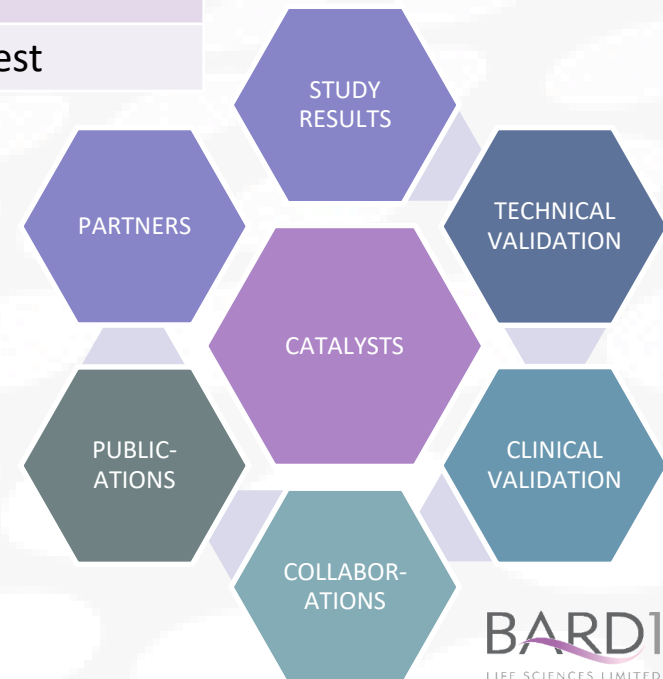


DR LEEARNE HINCH BVMS MBA | Chief Executive Officer

Biotechnology executive and consultant with extensive leadership, strategy, fundraising, operational, business development and commercial experience. Founder and director of Ingeneus Solutions Pty Ltd delivering commercialisation advice across drugs, devices, diagnostics & animal health. Previously CEO Eustralis Pharmaceuticals Ltd, CEO Immuron Ltd, COO OBJ Ltd, GM Holista CollTech Ltd, and CMO Chemeq Ltd.

Anticipated Milestones

Date (CY)	Events
4Q17	<ul style="list-style-type: none"> ○ Results of OC400 Study
1H18	<ul style="list-style-type: none"> ○ Initiate additional development studies for BARD1 Ovarian Cancer Test
2H18	<ul style="list-style-type: none"> ○ Initiate additional development studies for BARD1 Lung Cancer Test
	<ul style="list-style-type: none"> ○ Complete Technical Validation of BARD1 Test
	<ul style="list-style-type: none"> ○ Results of Cancer Vaccine animal efficacy studies
2019	<ul style="list-style-type: none"> ○ Commence first Clinical Validation study for BARD1 Test



Investment Summary

Compelling Opportunity

Non-invasive cancer diagnostics targeting unmet needs in US\$101B global market

POC Completed

BARD1 autoantibody tests demonstrated as highly sensitive and specific for detection of lung and ovarian cancers

Development Underway

BARD1 Tests undergoing further development and validation for early detection of lung and ovarian cancers

Diagnostic Advantages

Potential to enable earlier treatment, improve patient outcomes, save lives and reduce healthcare costs

Future Pipeline

Additional high-value diagnostic and therapeutic applications under evaluation

Solid IP

Patents covering technology, products and uses extending beyond 2031

Strong Newsflow

Multiple value-adding milestones expected over next 12-18 months

BARD1

Contacts

BARD1 Life Sciences Ltd

Ground, Tempo Building, 431 Roberts Rd
Subiaco WA 6008 Australia

P +61 8 9381 9550 | **E** info@bard1.com | **W** www.bard1.com

Dr Leearne Hinch | CEO | **E** leearne@bard1.com

Dr Irmgard Irminger-Finger | CSO | **E** irmgard@bard1.com

Income Statement for year ended 30 June 2017

	30-Jun-17	30-Jun-16
Revenue & other income	44,028	
Employee benefits expense	(701,669)	(13,673)
R&D expense	(1,089,976)	
Patent expenses	(131,187)	
Administration costs	(575,252)	(109,763)
Depreciation expense	(8,008)	(4,253)
Movement in fair value of investments	(8,990)	
Impairment of available assets for sale	(56,458)	
Foreign exchange gain/(loss)	13,754	
Share based payments	(25,000)	
Provision for grant repayment	(65,413)	
Listing expense of acquisition of BARD1		(2,463,404)
Loss arising from remeasurement fin liabilities		(250,000)
Loss before income tax expense	(2,604,171)	(2,841,093)
Income tax expense	0	0
Loss after income tax expense	(2,604,171)	(2,841,093)

Balance Statement for year ended 30 June 2017

	30-Jun-17	30-Jun-16
Current Assets		
Cash & cash equivalents	650,051	3,097,751
Trade & other receivables	31,956	76,412
Held for trading assets	16,659	25,649
Total Current Assets	698,666	3,199,812
Non-Current Assets		
Property, plant & equipment		8,008
Financial assets available for sale	28,230	84,689
Total Non-Current Assets	28,230	92,697
TOTAL ASSETS	726,896	3,292,509
Current Liabilities		
Trade and other payables	422,946	368,977
Provisions	46,013	20,224
Convertible notes		69,387
Total Current Liabilities	468,959	458,588
TOTAL LIABILITIES	468,959	458,588
NET ASSETS	257,937	2,833,921
EQUITY		
Issued capital	6,645,495	6,620,495
Distribution reserve	(309,421)	(309,421)
Foreign exchange translation reserve	(38,085)	(41,272)
Accumulated losses	(6,040,052)	(3,435,881)
TOTAL EQUITY	257,937	2,833,921

Acronyms

Accuracy	Percentage of true results correctly identified by a diagnostic test
AUC	Area Under the Curve is an index of the accuracy of a diagnostic test to discriminate between diseased and healthy states
Biomarker	Biological marker of disease state
CE Mark	Conformite Européene mark certifying that a product has met EU consumer safety, health or environmental requirements
CLIA	Clinical Laboratory Improvement Amendment of 1988
CT	Computed Tomography
ELISA	Enzyme-Linked Immunosorbent Assay
FDA	Food and Drug Administration is the US regulatory authority for medical drugs and devices
HBOC	Hereditary breast and ovarian cancer
Incidence	Number of new cases of a disease in a population during a given time period
IND	Investigational New Drug
IVD	In Vitro Diagnostic
IP	Intellectual Property
FL	Full Length
LDT	Laboratory Developed Test
MRI	Magnetic Resonance Imaging
Pack-year	Packs per day x number of years smoking
PCT	Patent Cooperation Treaty
PET	Positron Emission Tomography
Prevalence	Number of total cases of a disease in a population over a given time period
ROC	Receiver Operating Characteristics
RT-PCR	Reverse Transcriptase Polymerase Chain Reaction
Sensitivity	Probability that a diagnostic test will yield a positive result when the disease is present
Specificity	Probability that a diagnostic test will yield a negative result when the disease is absent
TGA	Therapeutic Goods Administration is the Australian agency for evaluation of medical goods
TVUS	Transvaginal Ultrasound